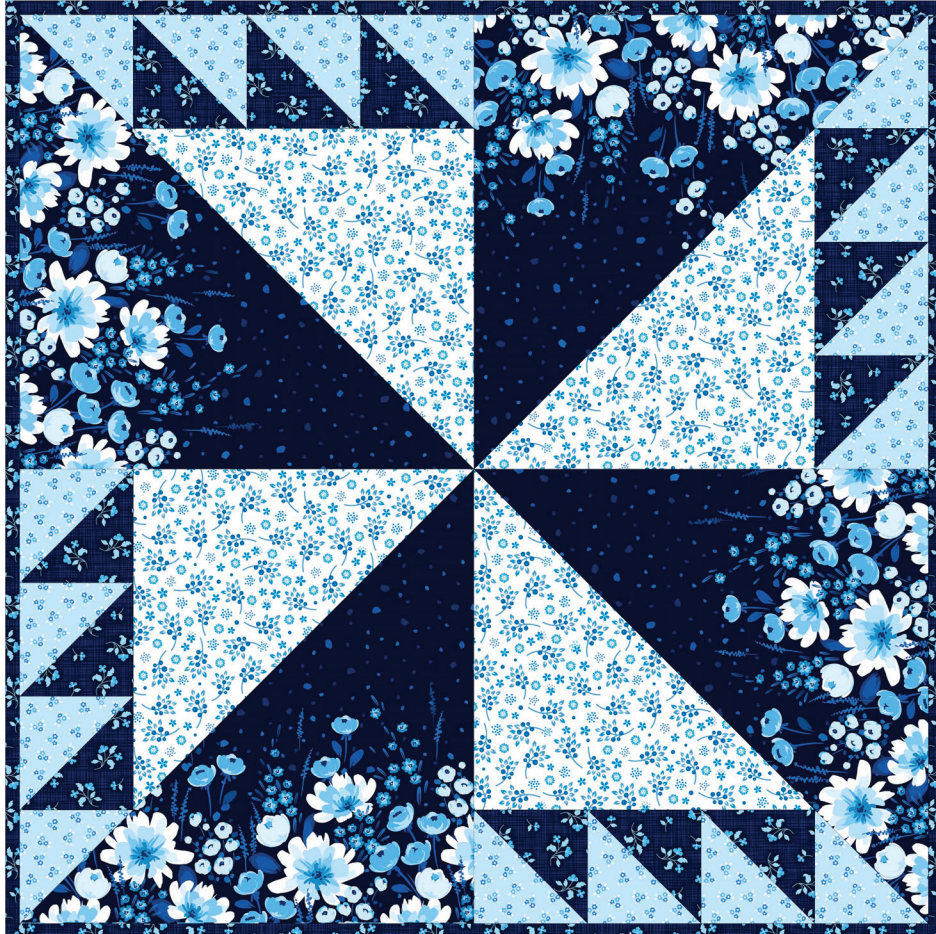




A DIVISION OF NORTHCOTT



PINWHEEL GARDEN

FREE PATTERN • 33" x 33" • By Northcott Studio

Northcott Canada
101 Courtland Avenue
Vaughan, Ontario L4K 3T5

Northcott USA
1050 Valley Brook Ave,
Lyndhurst, NJ 07071

www.northcott.com

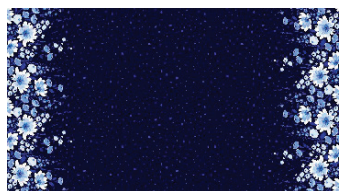
Pinwheel Garden Table Topper

Featuring Patrick Lose Fabrics'
Madison's Garden Collection

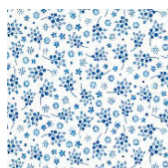
Finished Size: 33" x 33"

All seams sewn using ¼" seam allowance

Requirements:



Fabric A – 10417-49 – 1 yd



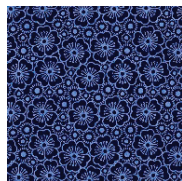
Fabric B – 10406-10 – 1/2 yd



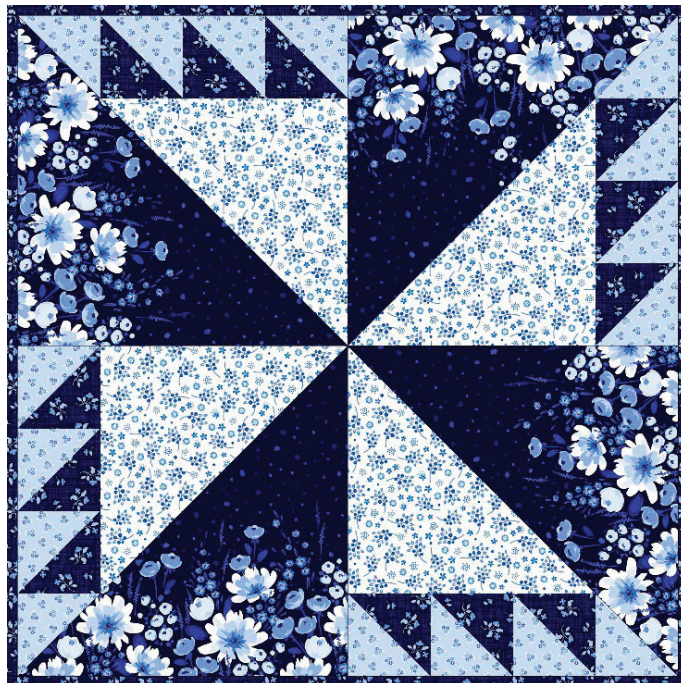
Fabric C – 10401-40 – 1/3 yd



Fabric D – 10411-49 – 5/8 yd (includes Binding)

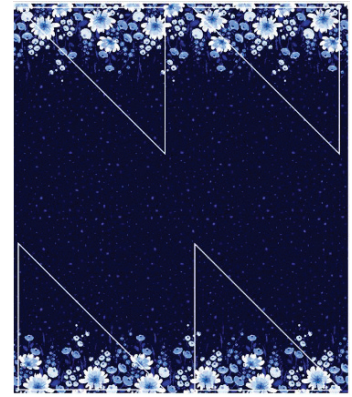


Backing – 10407-49 – 1 1/8 yds

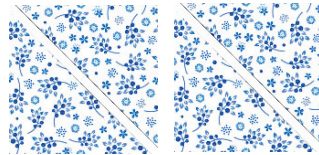


Instructions:

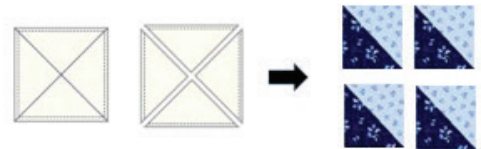
1. From Fabric A, cut 4 – 17” squares (two squares from each selvage edge), then sub-cut each square diagonally to yield four right angle triangles, as shown.



2. From Fabric B, cut 1 – 13” x WOF strip, then sub-cut 2 – 13” squares. Cut each square once diagonally to yield four right angle triangles.



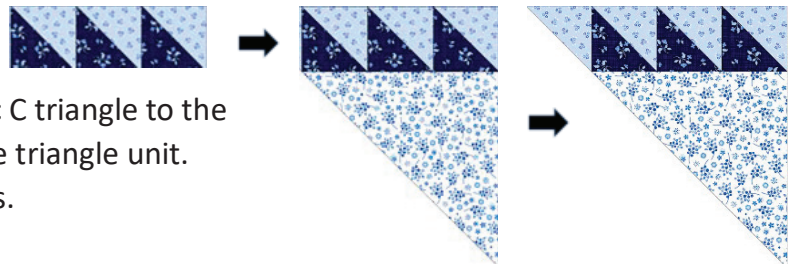
3. From Fabric C & D, cut 1 – 7” x WOF strip, then sub-cut 3 – 7” squares. Pair the Fabric C & D squares with right sides together and sew around the outer edges using a ¼” seam allowance. Make two diagonal cuts, open pieces and press seams to the dark side. Repeat to make 12 HSTs.



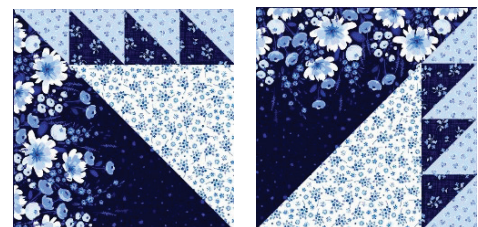
4. Trim the remaining Fabric C strip to 4 ½”, then sub-cut 2 – 4 ½” squares. Cut each square once on the diagonal to yield four right angle triangles.



5. Sew three HSTs together as shown. Then sew a Fabric B triangle (from Step 2) to the HST row. Add a Fabric C triangle to the left side as shown to complete the triangle unit. Repeat to make four triangle units.



6. Sew a Fabric A triangle to the long edge of the triangle unit made in Step 5 to complete the block. Repeat to make four blocks.



7. Join blocks together, rotating each block as shown, to complete the quilt top.

8. Layer quilt top with batting and backing. Quilt as desired.

9. To prepare binding, cut four Fabric D 2 ½” x WOF strips. Join strips using diagonal seams. Fold strip in half on the long edge, wrong sides together.



10. Bind quilt using your favorite method.